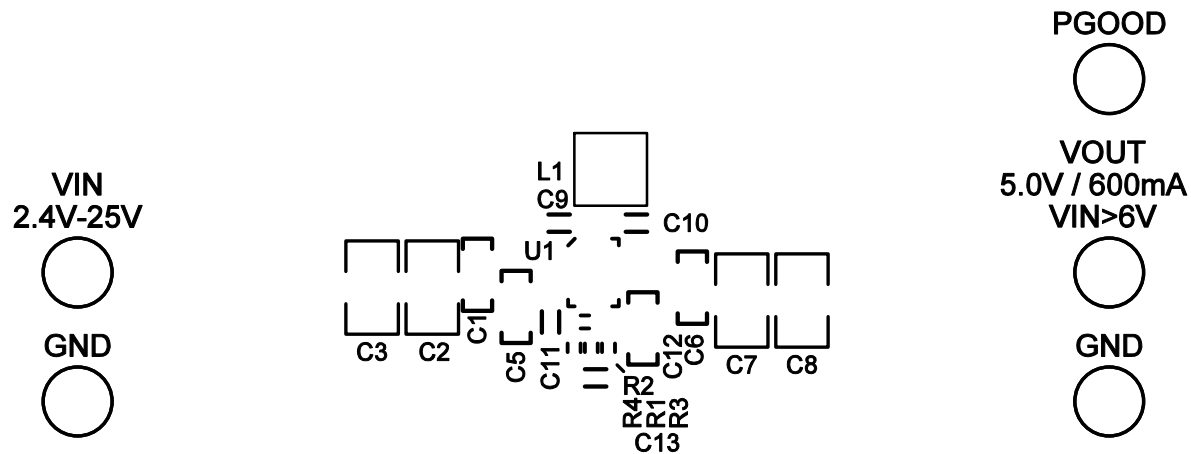
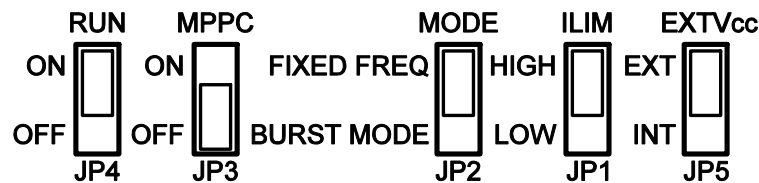


LTC3130

25V, 600mA BUCK-BOOST DC/DC CONVERTER WITH 1.6uA QUIESCENT CURRENT DEMO CIRCUIT 2355A



NOTE: FOR MPPC, REMOVE
R8 AND POPULATE R7 AND R9.
DO NOT ALLOW MPPC PIN
VOLTAGE TO EXCEED 6.0V.



LINEAR TECHNOLOGY www.linear.com
(408) 432-1900

TOP SILKSCREEN
LINEAR TECH CORP.
DEMO CIRCUIT 2355A-3 * LTC3130
DATE: 05-23-16